

A photograph of a modern, two-story building with a dark wood-clad upper level and a red brick lower level. The building features several white-framed windows and doors, some of which are partially covered by climbing green plants. A large, paved stone patio runs along the base of the building, with a wooden table and chairs set on it. The building is surrounded by lush green trees and grass. The sky is blue with scattered white clouds.

Howard Morley
& Sons

PER MONTH

£1,950 Per Month

Chiddingfold Road

Godalming, GU8 4PB



Approximate Gross Internal Area
63.0 sq m / 678.12 sq ft

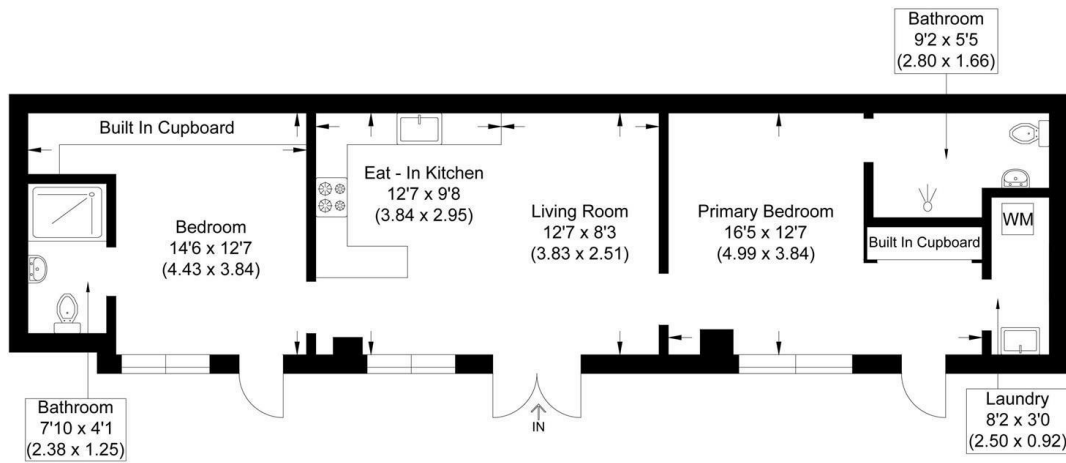
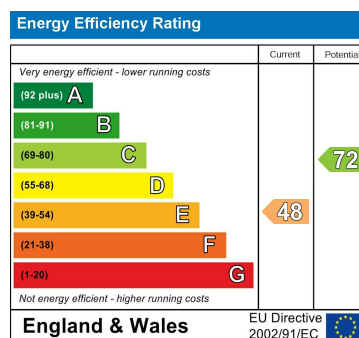


Illustration for identification purposes only, measurements are approximate, not to scale.

2	
2	
1	



Agents Note: Whilst every care has been taken to prepare these particulars, they are for guidance purposes only. All measurements are approximate and are for general guidance purposes only and whilst every care has been taken to ensure their accuracy, they should not be relied upon and potential buyers/tenants are advised to recheck the measurements

Howard Morley
& Sons

OFFICE ADDRESS
276 High Street
Guildford
Surrey
GU1 3JL

OFFICE DETAILS
01483 575 304
lettings@hmorley.co.uk
hmorley.co.uk